



◀ RESI-DALI-PS
 ◀ RESI-DALI-SIO
 RESI-DALI-ETH ▶

New enhanced firmware
 Improved MODBUSConfigurator software
 Supports DALI 1.0, DALI 2.0, DALI24

RESI-DALI-PS: DALI power supply, 200mA
 RESI-DALI-SIO: DALI master, RS232+RS485

NEW

RESI-DALI-ETH: DALI master, Ethernet

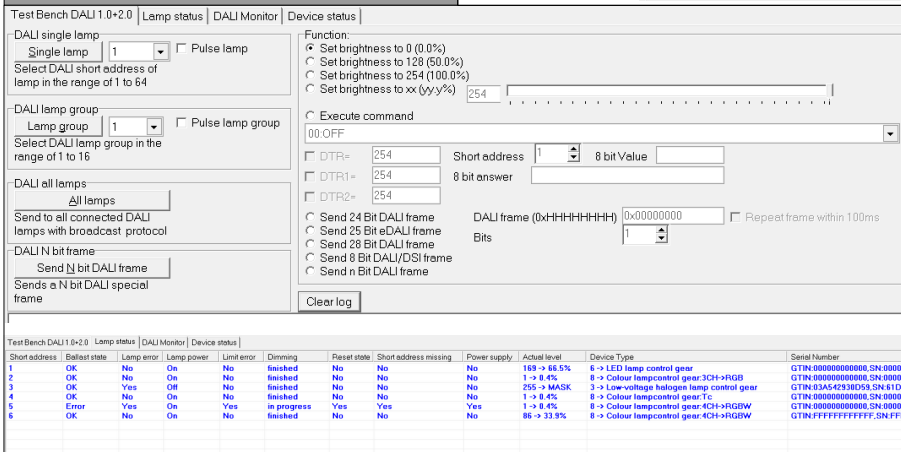
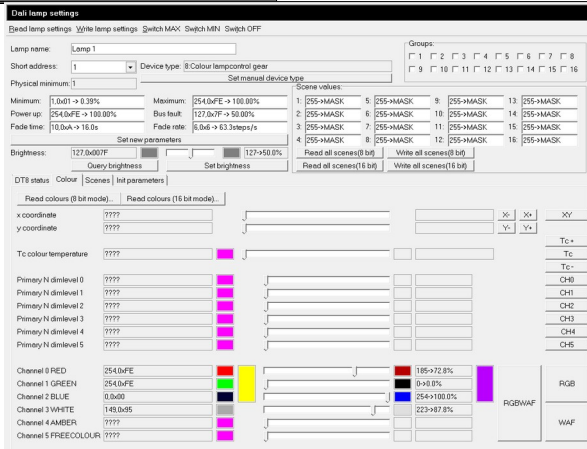


NEW

MODBUSConfigurator ▶

New design, more features:

- Improved search functions for DALI lamps
- Support of DALI device type 6+8
- Support for all DALI color schemes: Tc, XY, RGBWAF, Primary N
- Send/receive DALI 1.0+2.0 commands
- Send/receive DALI24 frames
- Search & address DALI control gears
- Query of DALI control gear status
- DALI monitor for easy interpretation of DALI bus traffic



◀ DALI 1.0/2.0 SUPPORT

Improved support of DALI frames:

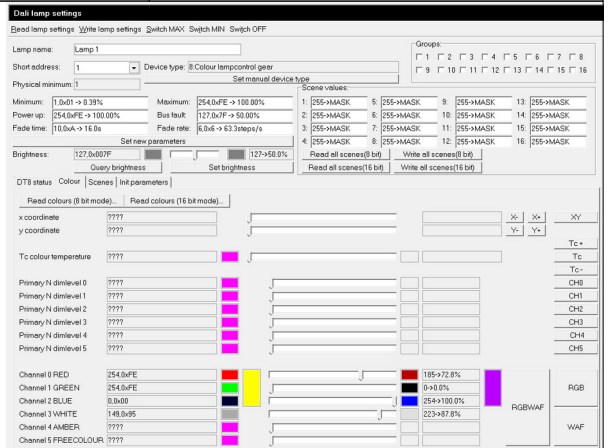
- Send/receive 8/16/24/25/28 and up to 32 bit DALI frames
- Internal receive ring buffer for readout of complete DALI traffic via MODBUS/ASCII
- Internal transmit ring buffer for sending of complete DALI sequences via MODBUS/ASCII
- New MODBUS registers for complex DALI command sequences like control of RGBWAF dimmer
- Support of DALI send priorities & send slots

RGBWAF COLOR DIMMER ▶

NEW

Support of DT6 & DT8:

- Complete support for configuring DALI DT6 & DT8 lamps
- All DALI DT8 colour profiles supported:
 - XY
 - Tc (cold-warm white)
 - Primary N
 - RGBWAF
- 8 and 16 bit DATA mode



RESI's NEW DALI PORTFOLIO

Our revision of DALI gateways and MODBUSConfigurator software

NEW



NEW

◀ ENHANCED FIRMWARE

- Full support of all DALI features with ASCII commands
- Better DALI receive frame synchronization for enhanced collision detection on DALI bus
- Improved DALI send software with support of DALI slot priorities for DALI multi master systems with occupancy or light sensors
- DALI frame length: 8/16/24/25/28 up to 32 bit selectable
- Support of eDALI frame

◀ MORE MODBUS REGISTERS

- More MODBUS registers for support of
 - DALI 2.0 commands
 - DALI 24bit commands
 - eDALI commands
 - DALI 28bit commands
 - DALI variable bit frame commands
- normal and reverse word order in MODBUS mapping to support almost any MODBUS master firmware
- internal send & receive ring buffer for monitoring the complete DALI traffic on the DALI bus with time stamp



◀ FASTER MODBUS

- Faster MODBUS respond to MODBUS master
- Enhanced serial settings:
 - More baud rates: 300-256.000bd
 - Parity: none, even & odd
 - Stop bits: 1 or 2 stop bits
- MODBUS stack is more robust against communication errors on the serial line and offers a better timing
- Internal firmware speed increased

◀ SPECIAL DT8 SUPPORT

- Special MODBUS registers to support
 - XY color dimmer
 - Tc color dimmer
 - Primary N color dimmer
 - RGB & RGBWAF dimmer
- Special ASCII commands for full support of DT8 devices

BETTER SEARCH & REORDER ▶

- Search & address DALI 1.0 lamps
- Reorder DALI 1.0 lamps with short address
- Define DALI 1.0 groups for lamps
- Search for DALI 2.0 control gears like occupancy or light sensors

EASIER INSTALLATION ▶

- New version available on our homepage www.RESI.cc
- With setup software for easier installation

BACKWARD COMPATIBLE ▶

- All old DALI modules are supported by new software
- All old projects can be loaded and modified for old converters

