

SMART METERING

Add our metering products
to your solution...



WHY?

Smart meters are nowadays everywhere. You will find them measuring your electricity or water consumption. They are used to bill gas, heating or cooling energy consumption. Of course they are also used to optimize your systems to save energy!

WHAT?

For many years we produce gateways & devices to readout smart meters. All of our products are equipped with RS232/RS485 or with Ethernet interface. Beside gateways, which deliver the pure protocol (like our MBUS level converters), we offer versions which allow to read the data via MODBUS or ASCII text protocol. We also offer pulse counters and special meters for DC consumption measurement.

We offer:

MBUS gateways

Pure **MBUS** level converter

S0 pulse counter modules

DC smart meter with shunt or hall sensor measurement

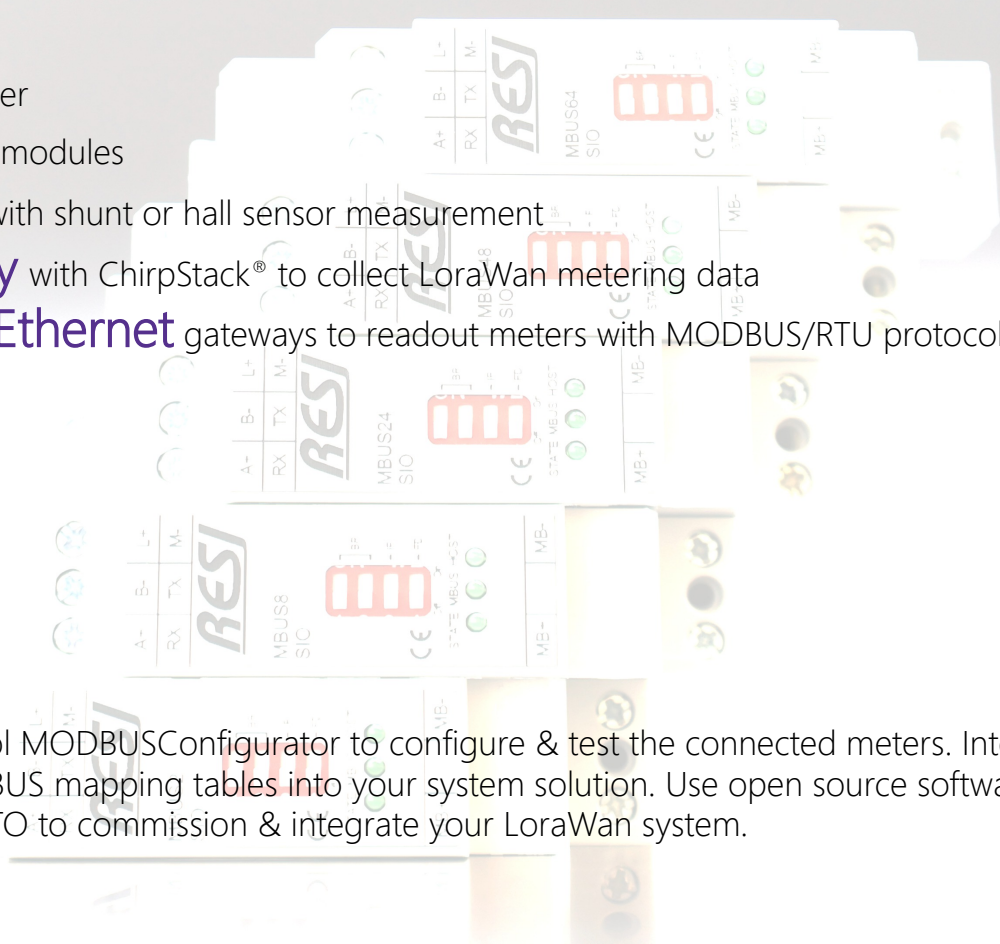
LoraWan gateway with ChirpStack® to collect LoraWan metering data

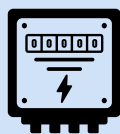
RS232/RS485 to Ethernet gateways to readout meters with MODBUS/RTU protocol

...

HOW?

Use our free software tool MODBUSConfigurator to configure & test the connected meters. Integrate our gateways with our MODBUS mapping tables into your system solution. Use open source software like ChirpStack or MOSQUITTO to commission & integrate your LoraWan system.





MBUS

OUR MBUS PORTFOLIO

RESI-MBUSx-SIO
RESI-MBUSx-ETH

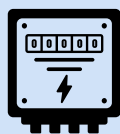
Readout of MBUS meters and convert MBUS data into MODBUS registers

- ✓ Versions for 2/8/24/48/64 connectable meters
- ✓ Use MODBUSConfigurator for commission & test of all connected meters
- ✓ Readout with MODBUS or ASCII protocol

RESI-MBUSx-LVL
RESI-MBUSxLVL-ETH

Readout of MBUS meters, if host knows how to handle MBUS protocol

- ✓ Versions for 24/48/64 connectable meters
- ✓ Host has to handle complete MBUS protocol
- ✓ Either RS232 or Ethernet socket
- ✓ Readout with MBUS protocol



DC METER

OUR DC SMART METERS

RESI-1EGYDCS-SIO,ETH
RESI-1EGYDC-SIO,ETH

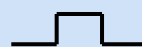
DC smart meter for up to 100V and up to 255A. DC current measuring with external shunt or hall sensor.

- ✓ Measures up to 100V=
- ✓ Measures up to 255A
- ✓ Calculates power and energy
- ✓ Stores all measured variables in MODBUS registers
- ✓ Permanent storage for energy
- ✓ Readout with MODBUS or ASCII protocol

INTERESTED?

Contact our sales by email sales@RESI.cc or give us a call +43-316-262062-0

S0



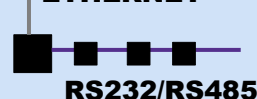
OUR S0 PORTFOLIO

RESI-1S0-SIO,ETH
RESI-2S0-SIO,ETH

Gateway to count S0 impulses and result readout in MODBUS registers

- ✓ Versions for 1 or 2 S0 impulse meters
- ✓ Configuration of impulse multiplier
- ✓ Permanent storage for all counted impulses
- ✓ Readout with MODBUS or ASCII protocol

ETHERNET



**MODBUS
TCP-RTU**

ETHERNET ↔ RS232 or RS485

RESI-1RS232-ETH
RESI-1RS485-ETH

Ethernet communication with devices connected either with RS232 or with RS485

- ✓ Readout of serial devices via Ethernet
- ✓ Optional MODBUS/TCP to MODBUS/RTU conversion in gateway
- ✓ Plain mode to use every protocol
- ✓ Setup of serial parameters via MODBUS protocol

**LoRaWAN®
4G-LTE**



LORAWAN CONTROLLER

RESI-C4-A-LTE-xGB
RESI-C4-A-LORA-LTE-xGB
RESI-C4-A-LORA-LTE-2E-xGB

Based on the Raspberry Pi Compute Module 4*. Full LoRaWan Receiver & LTE modem & dual Ethernet.

- ✓ Handles all LoRaWan devices
- ✓ ChirpStack® preinstalled
- ✓ MQTT forwarder
- ✓ MOSQUITTO® MQTT server preinstalled
- ✓ Full LINUX
- ✓ 2/4/8 GB RAM, 32 GB SD CARD
- ✓ Build your own product with your unique software

SMART METERING



MBUS to MODBUS/ASCII gateways



S0 impulse counter modules



DC SMART METER with MODBUS/ASCII



ETHERNET to RS485/RS232 gateways



LORAWAN controller with 2xEthernet+LTE modem



LORAWAN controller with 2xEthernet+LTE+Wifi